



EXP Alarm

ALARM PANEL EXPANDER TO THE PROCON GSM/4G CLOUD MODULE



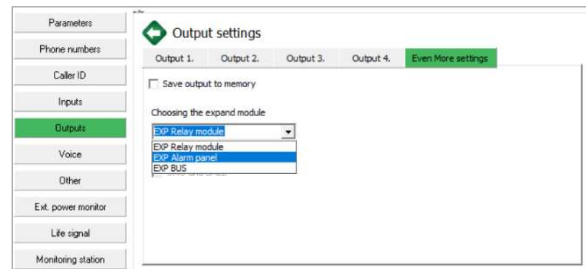
EXP Alarm

ALARM CENTER EXPANSION CARD TO PROCON GSM CLOUD / PROCON 4G CLOUD

Description

The EXP Alarm add-on module is a central extension panel with alarm centre functions and a sounder for the ProCon GSM Cloud and ProCon 4G Cloud modules.

For proper operation, set the type of the extension panel in the ProRead software in the "**Outputs**" menu on the "Even more settings" tab. Select "**EXP Alarm Panel**".



Application areas

- It can be used as a standalone alarm center
- Handling siren and key switch
- Giving feedback about the state of the arming

Technical description



- **IN/GND**
1 input for arming/disarming of the system by key switch
- **LED/GND**
1 status output (lamp or LED)
- **OUT2/GND**
1 OC output (it can be loaded up to 30VDC/300mA)

- It can be controlled by SMS or by voice call
- It can be monostable (up to 65000 seconds), or bistable
- It allows to control a siren if the ProCon GSM works as an alarm centre
- 1 buzzer indicates the opening and closing time by tone

Parameters

- 1 OC output (output load max. 30VDC/300mA)
- Operation temperature -20°C – +50°C

