



EXP Relay

1 relay expand module to the ProCon GSM/4G Cloud and ProLine 4G



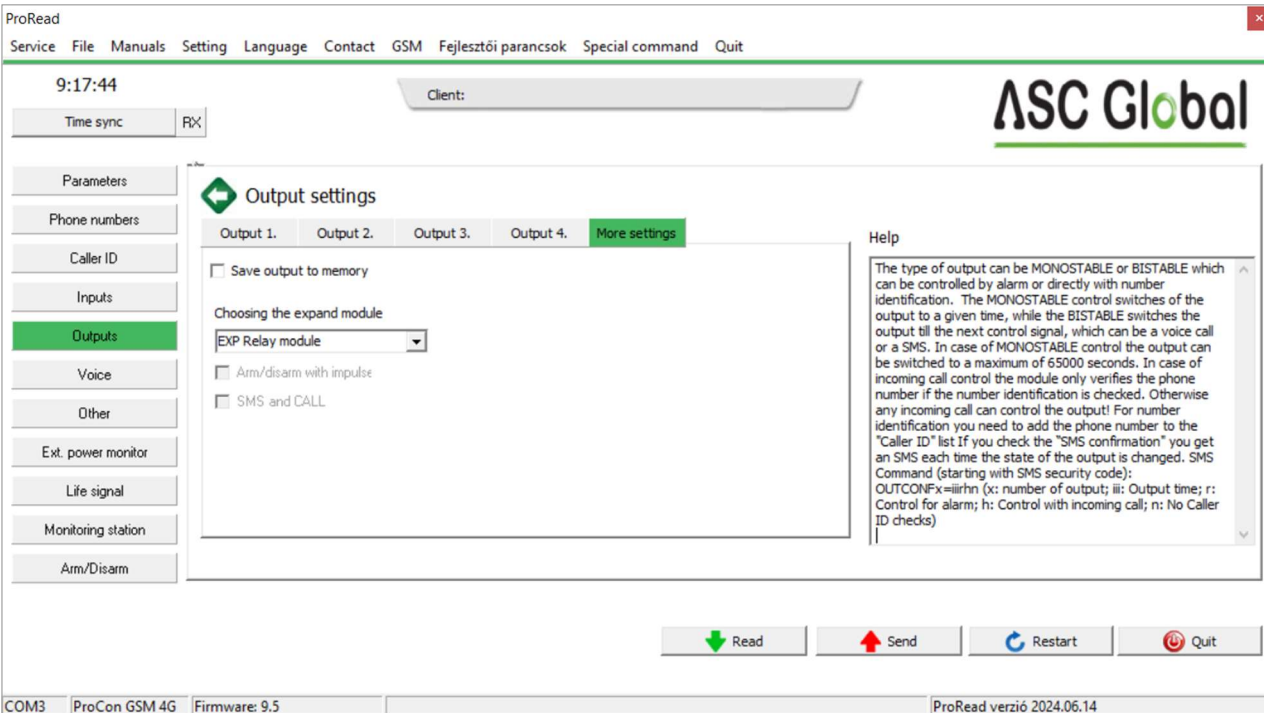
INSTALLER'S MANUAL

Module description

Expansion panel with one relay output for ProCon GSM Cloud, ProCon 4G Cloud and ProLine 4G.

- The output can be controlled by SMS or by free call
- The output can be Monostable (up to 65000 seconds) or bistable
- If the ProCon GSM is used as an alarm center, the output can control the siren

In the ProRead programming software, the default setting is the "Output expansion" module, it is not necessary to configure it..



Application areas

- Automation: gate, barrier, garage door opening
- It is possible to set permissions for the outputs
- In case of DTMF control we have the possibility to use our GSM module as a remote controller

Relay output (it can be loaded max.)	50VDC/1A
Operational temperature	-20°C – +50°C

