



EXP Relay3

3 relay expand module to the ProCon GSM/4G Cloud module



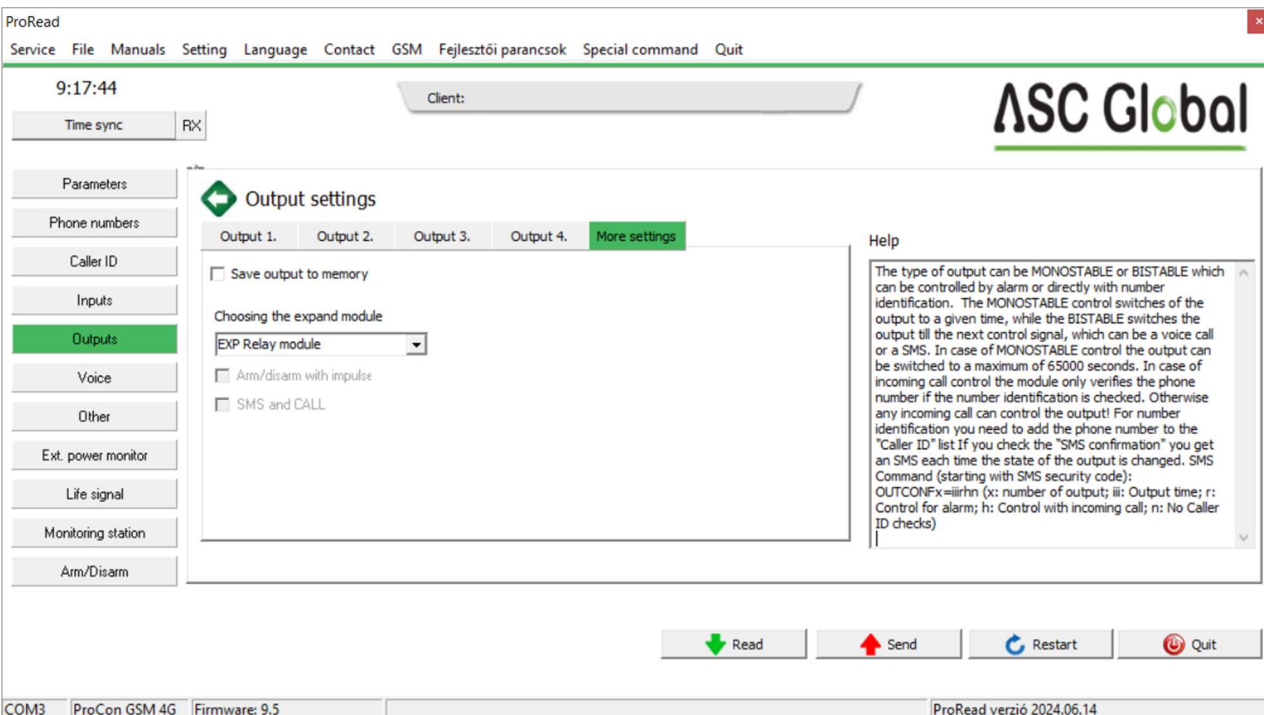
INSTALLER'S MANUAL

Module description

Expansion panel with three relay outputs for ProCon GSM Cloud, ProCon 4G Cloud modules which can be loaded max. 24VDC/1A.

- 3 pieces of NO/NC relays (it can be loaded max. 24VDC@1A)
- The NO/NC operation can be chose on the expansion module by a jamper
- The outputs can be controlled by SMS, voice call, via bluetooth, or even trough GPRS application
- The outputs can be configurated separately (Monostable, bistable)
- It can be managed separately

In the ProRead programming software, the default setting is the "Output expansion" module, it is not necessary to configure it..



Application areas

- Automation: gate, barrier, garage door opening
- It is possible to set permissions for the outputs
- In case of DTMF control we have the possibility to use our GSM module as a 4 channel remote controller

| | |
|--------------------------------|---------------|
| 3 pieces of NO/NC relay output | max 24VDC/1A |
| Operational temperature | -20°C – +50°C |

