



OC Relay

230V relay panel for OC output



INSTALLATION GUIDE

Description

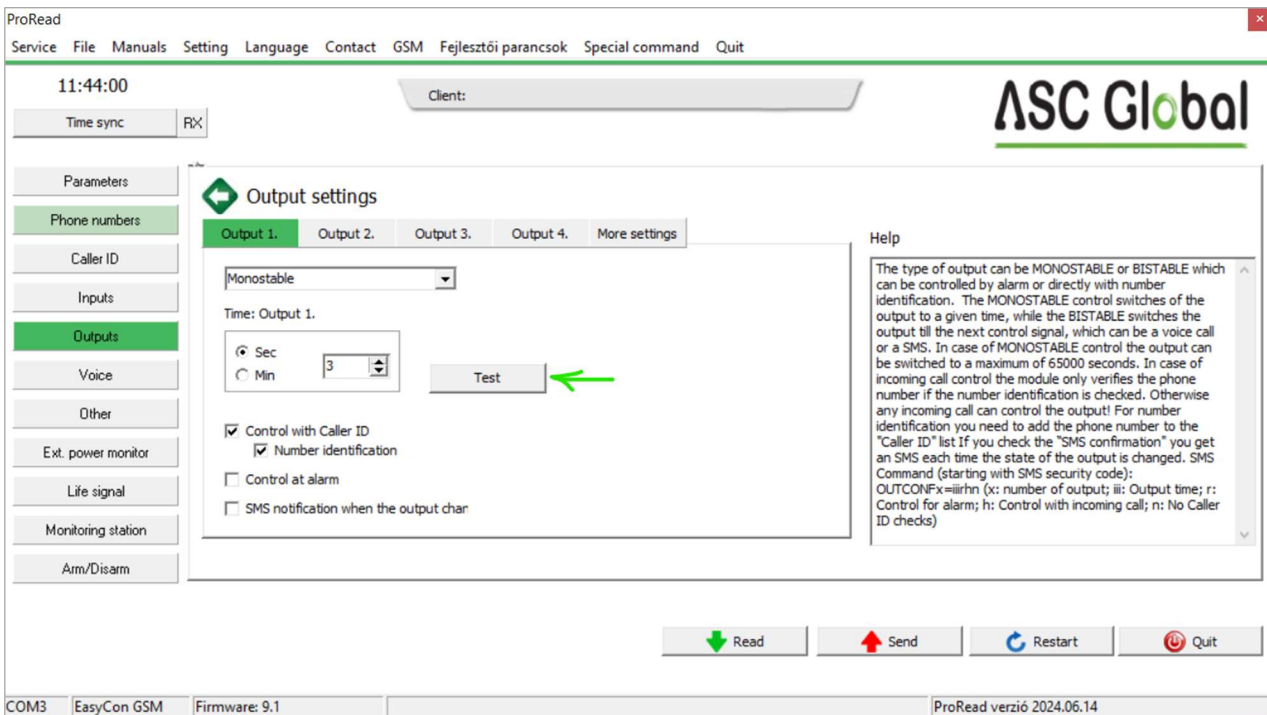
By using OC relay we can use the open collector output as a relay output. In addition, the low-current relay output can be transformed to a 230 V output. 230V relay panel with NO/NC output.

The ProRead programming software allows us to test the operation of the OC relay connected to the OC compatible module.



Before testing, make sure the connected polarity is correct!

(+12V connection point check)



Application area

We can use it for the OC output. Thus, we can give a contact to the input of the gate control unit..

Input	Open Collector (OC)
Relay	230V, 5A

